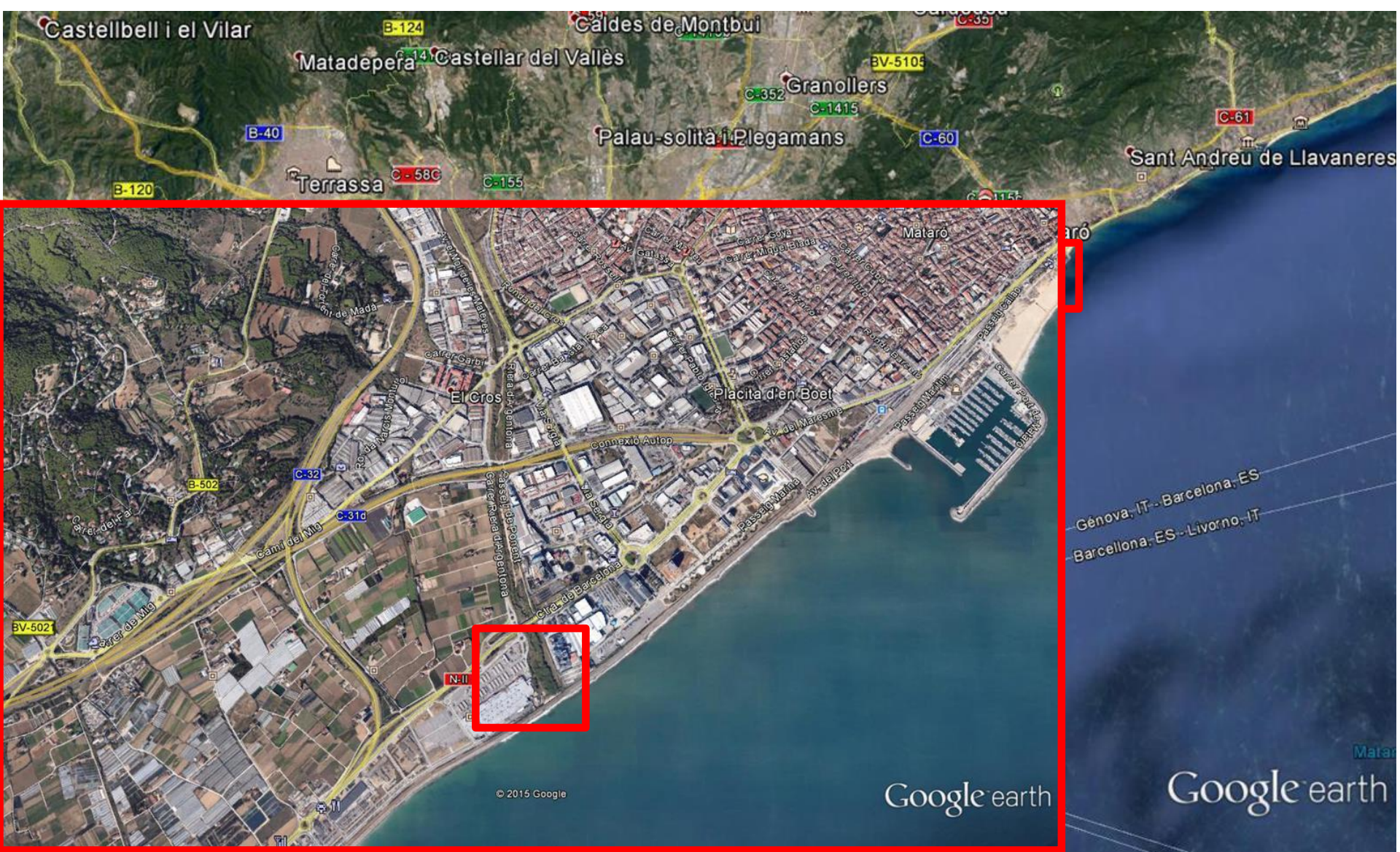


The Argentona site

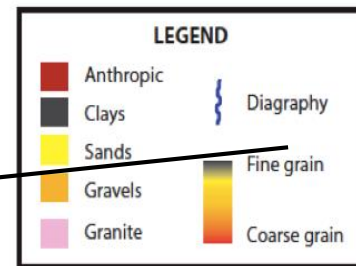
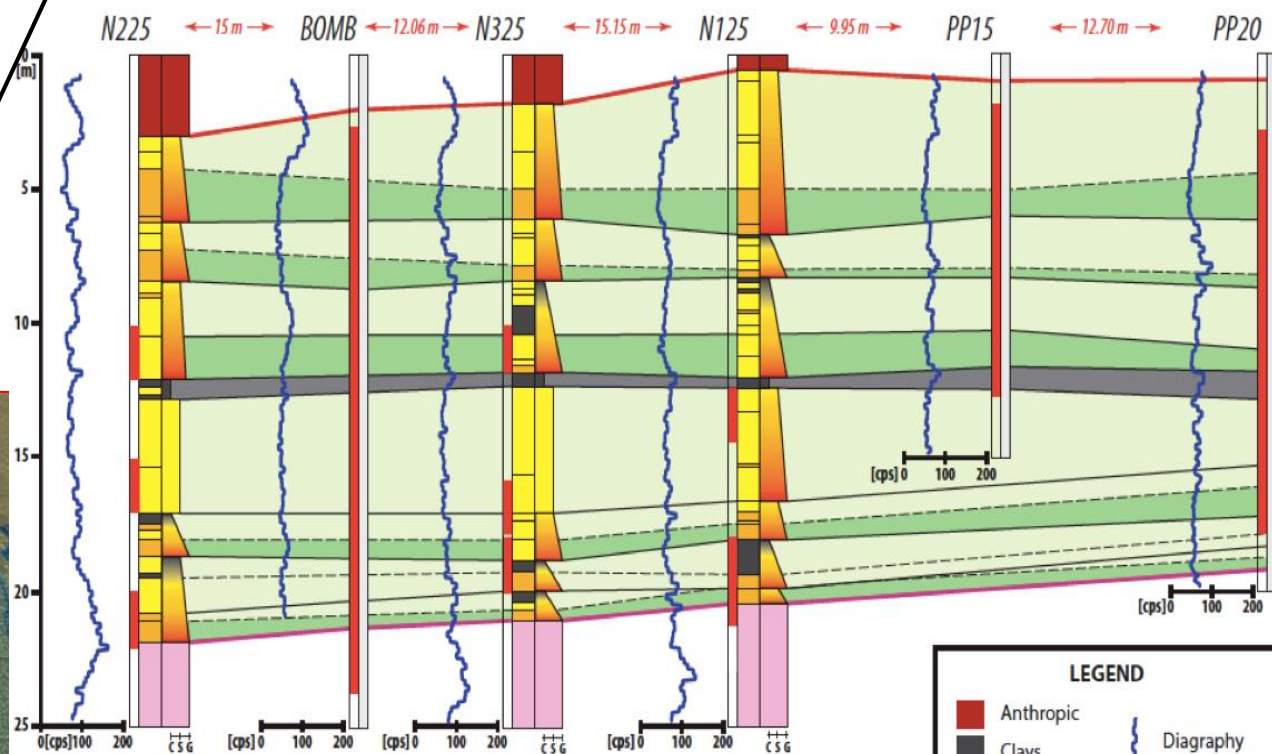
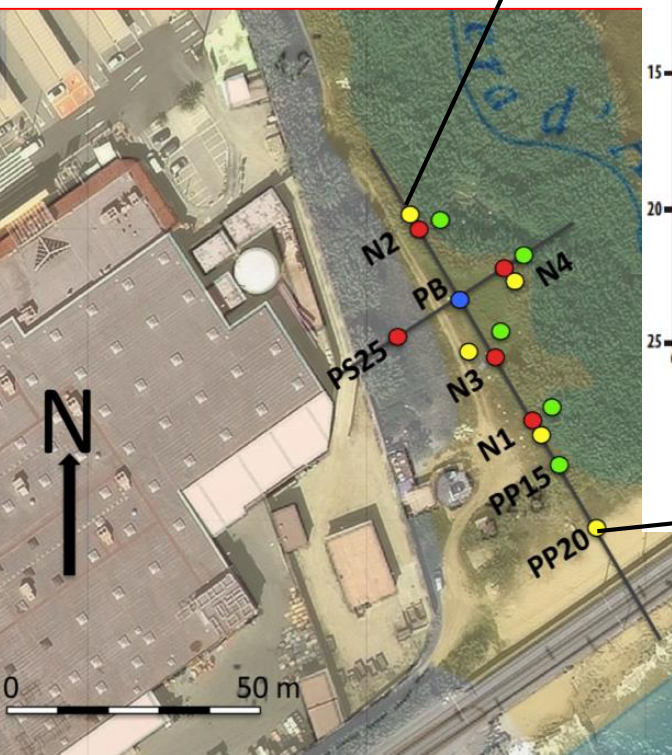
UPC-CSIC Groundwater hydrology group

Barcelona

Location



Geology



On-shore instrumentation

Most piezometers 3" with 2 m slotted interval Plus 2 open pumping wells

House to host expensive in-situ equipment (DTS, etc)

Control Panel

25 m

Nest 2

Nest 3

Nest 1

Nest 4

65 m

15 m

10 m

15m (no core)

25m

No core

25m
core

20m (no core)

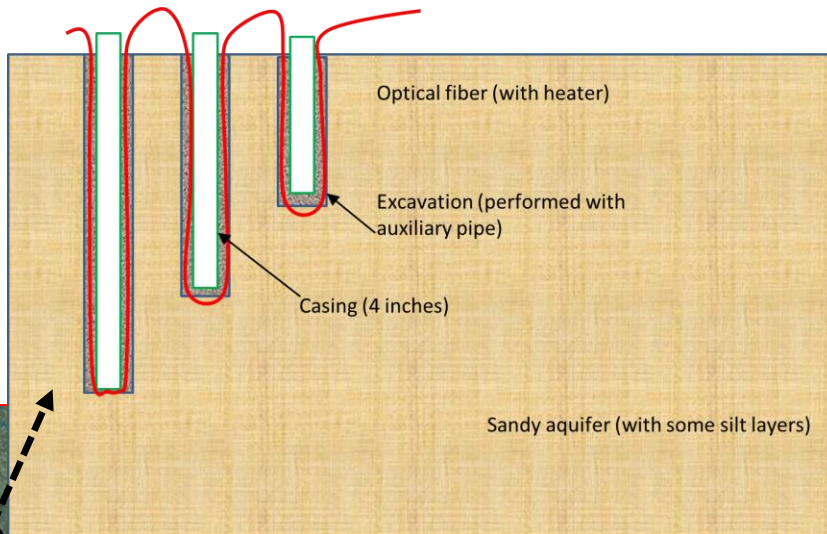
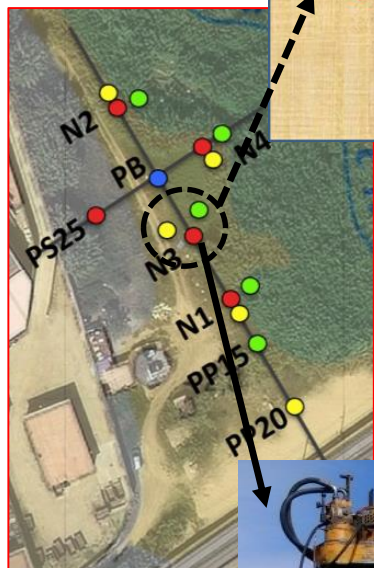
Piez. nest

Legend

- Pumping well 25 m depth
- Nest (3 piezometers at depths of 15, 20 and 25 m)
- isolated Piezom (Depth in m)



10 m



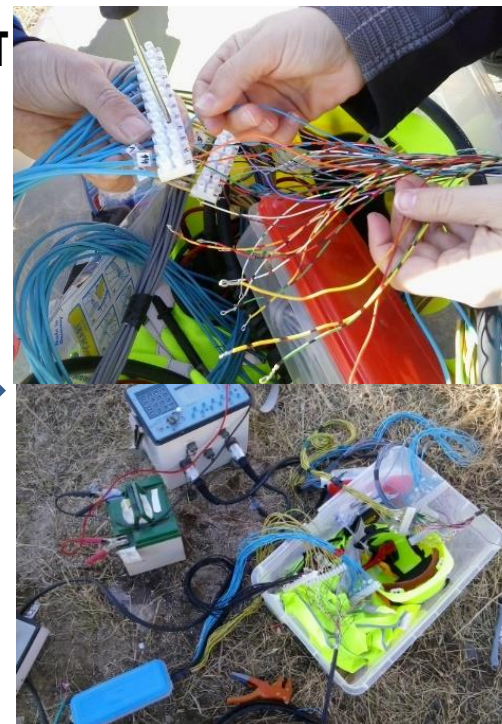
OF-DTS



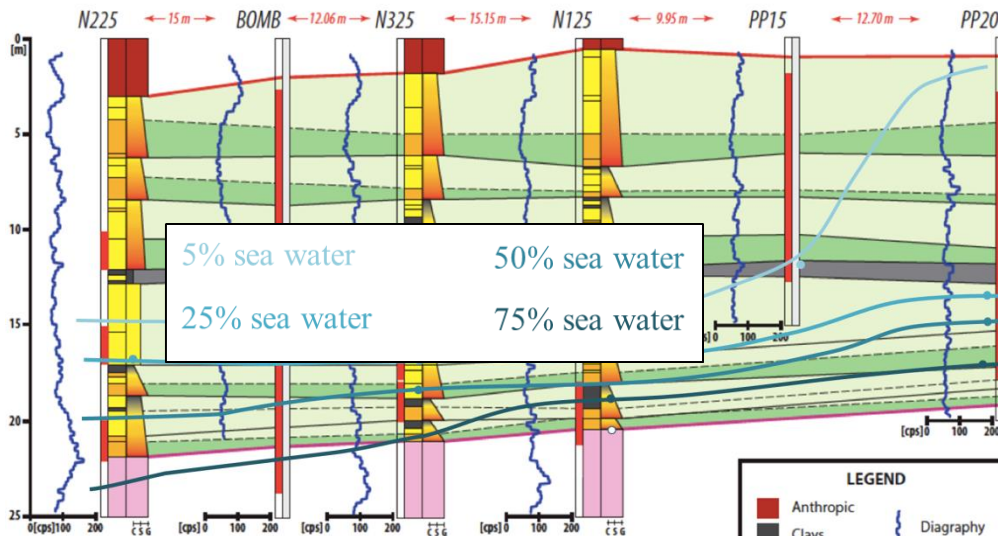
CHERT

Electrode

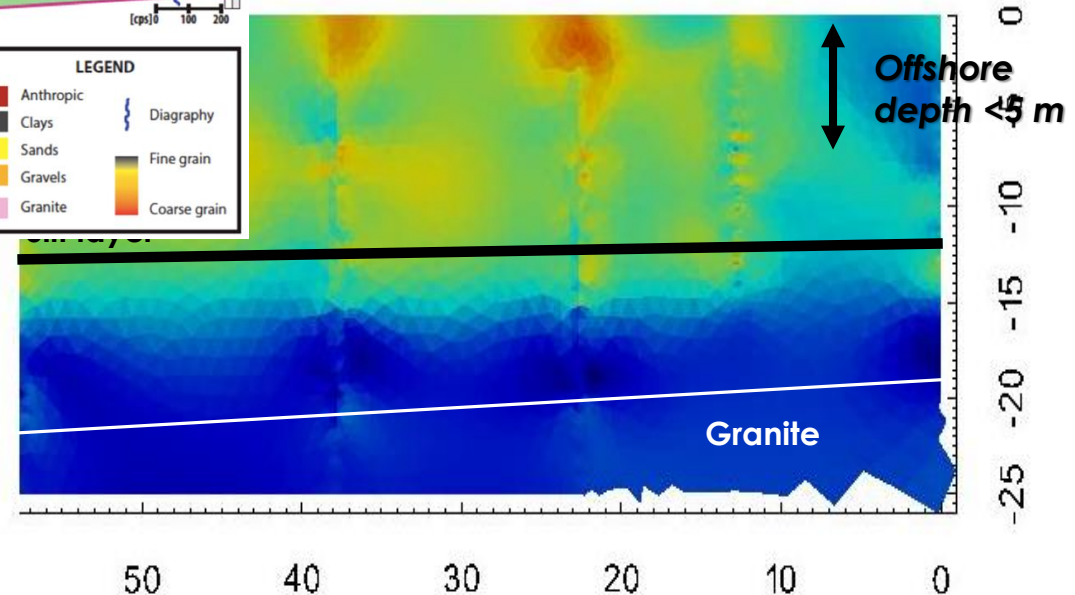
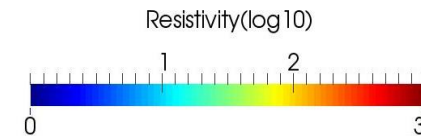
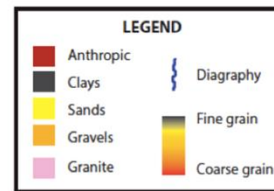
OF



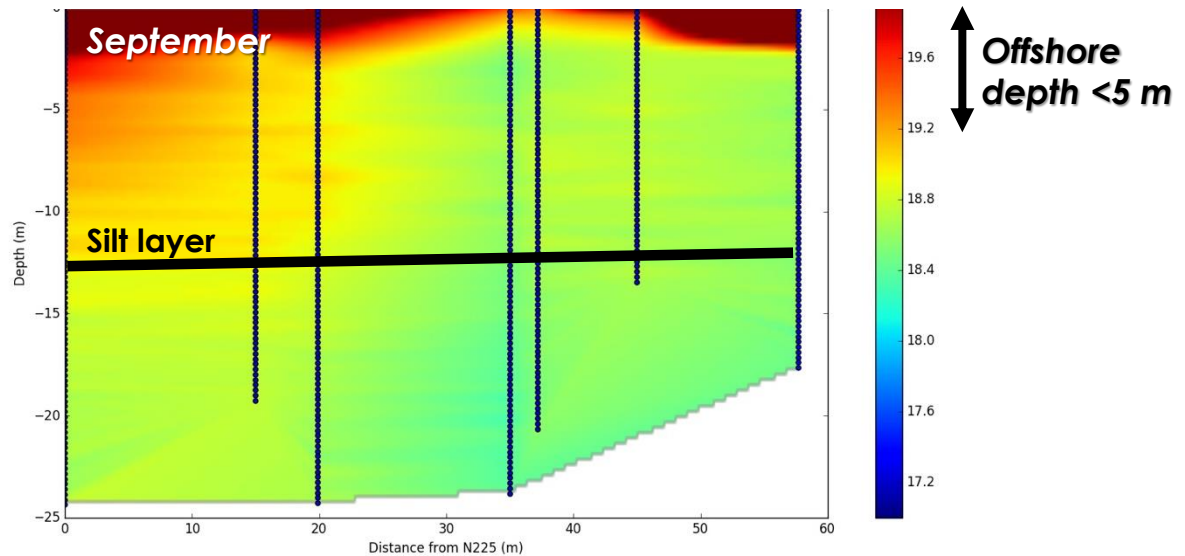
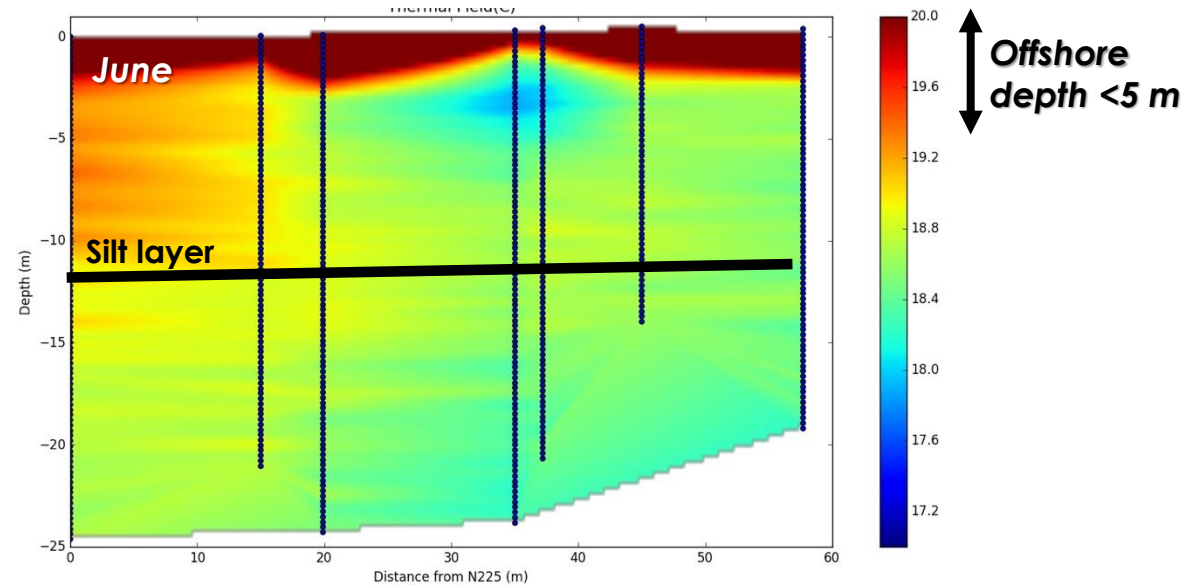
Conventional ERT and Cross Hole Electrical Resistivity Tomography (CHERT)



June field survey



Passive and active OF Distributed Temperature Sensing (FO-DTS)



Off-shore OF (still problems) planned ERT

